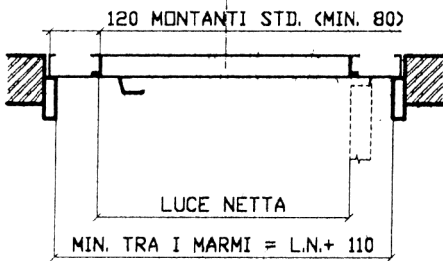
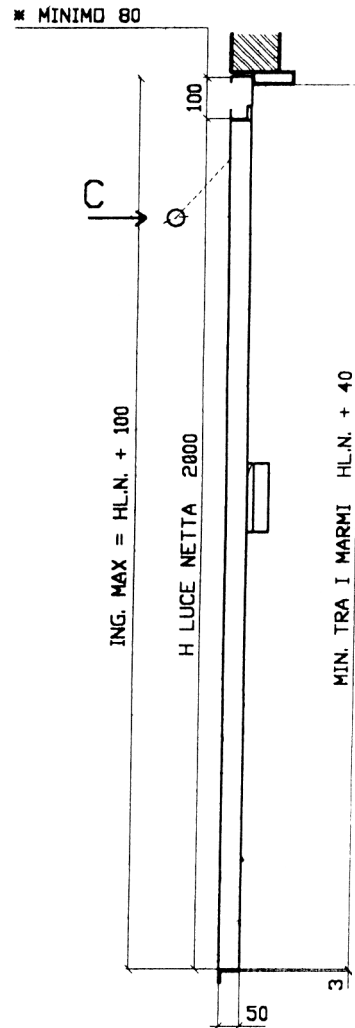
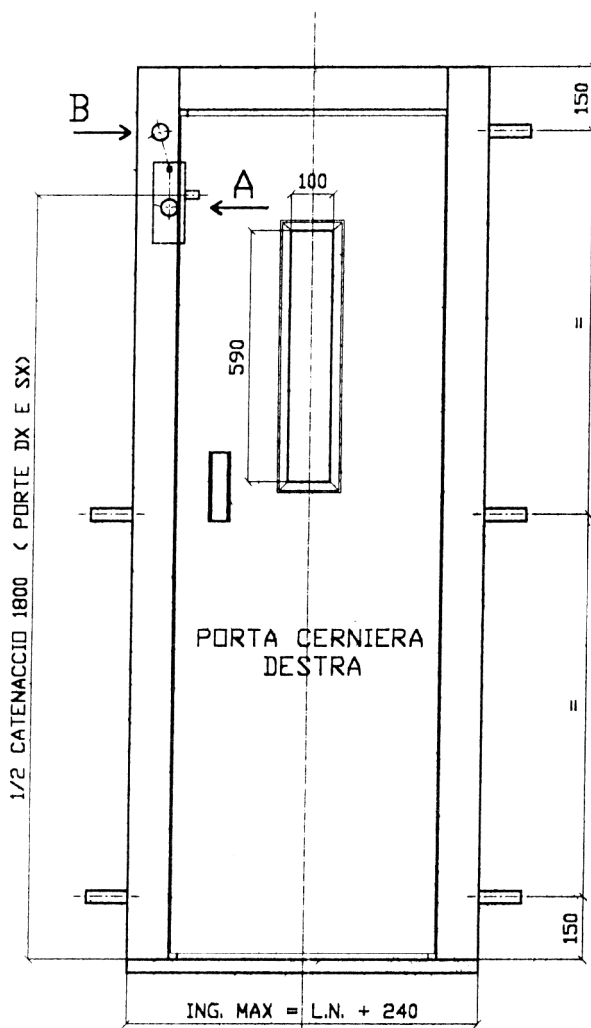


PORTA A 1 BATTENTE TIPO '73



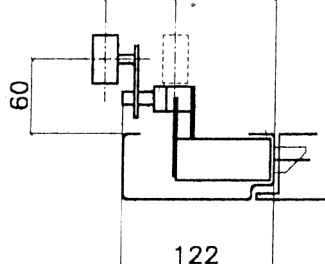
POSIZIONE ROTELLA
DI SBLOCCO SERRATURA

PORTE DX
SPINTA 'A' = 1800 - 30
SPINTA 'B' = 1800 + 160
SPINTA 'C' = 1800 - 30

PORTE SX
SPINTA 'A' = 1800 + 30
SPINTA 'B' = 1800 - 160
SPINTA 'C' = 1800 + 30

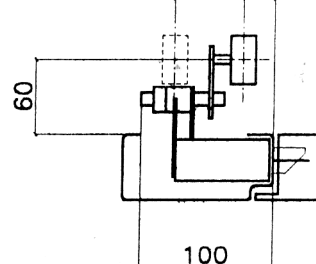
LEVA A 90' ESTERNA

spostam. max 55 min. 80



LEVA A 90' INTERNA

spostam. max 55 min. 25



PARTICOLARE CON LEVA SERRATURA A 90'